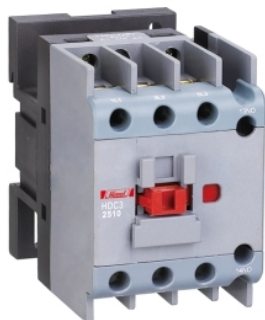


## Product data sheet

### Characteristics

# HDC33811M7

Contactor, HDC3-3811, 220/230 V, 50/60 Hz



#### Main

Range of product	HDC3
Product or component type	Contacteur
Contacteur application	Non-reversing
Poles description	3P
[I <sub>th</sub> ] conventional free air thermal current	50 A

#### Complementary

Utilisation category	AC-3 AC-4
[I <sub>n</sub> ] rated current	38 A
[U <sub>c</sub> ] control circuit voltage	220/230 V AC 50/60 Hz
Auxiliary contact composition	1 NO + 1 NC
[U <sub>i</sub> ] rated insulation voltage	690 V
[I <sub>e</sub> ] rated operational current	38 A at 380/400 V AC-3 22 A at 660/690 V AC-3 14 A at 380/400 V AC-4 8.9 A at 660/690 V AC-4
Motor power kW	18.5 kW at 380/400 V AC-3 18.5 kW at 660/690 V AC-3 7.5 kW at 380/400 V AC-4 7.5 kW at 660/690 V AC-4

#### Environment

Installation category	III
Pollution degree	3
Ambient air temperature for operation	-5...40 °C
Average ambient air temperature for operation	<= 35 °C (average over 24 hours)
Ambient air temperature for storage	-25...55 °C
Operating altitude	2000 m
Standards	IEC 60947-4-1
Product certifications	CB CE SEMKO
IP degree of protection	IP20
Relative humidity	0...50 % at 0...40 °C 0...90 % at 0...20 °C